

Wheels and castors guide

Versions / options

Directional lock



Blickle directional lock for pressed steel swivel castors
(product code: RI...)

Directional locks fix the swivel motion of a swivel castor in predefined directions. When the directional lock is activated, the swivel castor acts like a fixed castor.

This directional lock is provided as a separate part and is installed together with the swivel castor. It can also be installed later as there is no need to make structural changes to the swivel castor bracket.

This option is available for a wide range of swivel castor series. Please refer to the "versions / options" section on the relevant pages for more information.



Blickle directional lock for welded steel swivel castors
(product code suffix: -RI4)

Directional locks fix the swivel motion of a swivel castor in predefined directions. When the directional lock is activated, the swivel castor acts like a fixed castor.

This directional lock is an integrated unit welded to the top plate. It can be used for customer-specific fixing positions in addition to the standard 90° position (product code suffix: -RI4, four fixing positions). This version is robust and designed for use with heavy duty castors.

This option is available for a wide range of heavy duty welded steel swivel castors. Please refer to the "versions / options" section on the relevant pages for more information.



Blickle directional lock for heavy-duty swivel castors
(product code suffix: -RI4H)

Directional locks fix the swivel motion of a swivel castor in predefined directions. When the directional lock is activated, the swivel castor acts like a fixed castor.

This directional lock is a unit integrated with the top plate. This directional lock provides four fixing positions (90°) using a locking bolt. This version is extremely robust and designed for use with heavy-duty castors.

This option is available for a wide range of heavy-duty welded steel swivel castors. Please refer to the "versions / options" section on the relevant pages for more information.



Blickle directional lock and wheel brake for synthetic swivel castors
(product code suffix: -RIFI)

A combination directional lock and wheel brake is available for swivel castors in the Blickle MOVE series with a wheel diameter of 125 mm. It is operated with a two-part foot lever. The left lever activates the full locking system. The right lever activates the directional lock.

This "rear" brake system initially uses positive locking to prevent the rotation of the swivel head. The swivel head is locked by locking a brake spring in a toothed ball disc. In the second stage, the wheel is locked using a non-positive brake mechanism.

directional locks detail



Wheels and castors guide

Versions / options



Hub cap for end wheel

(product code suffix: -E)

Hub caps are made from zinc-plated, blue-passivated, Cr6-free pressed steel.

They protect the outside ball bearing of end wheels against dirt, dust, etc., and cover the axle end and wheel fitting. In end wheels, the ball bearing is slightly recessed on the outside of the hub. This makes it easy to fit the hub cap on the wheel hub. This reduces the clamping length.

This option is available for a wide range of wheel series.

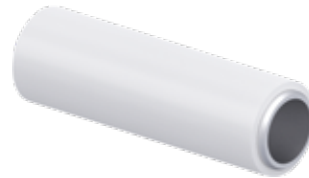
Please refer to the "versions / options" section on the relevant pages for more information.



STARLOCK® cap made from stainless steel

(product code: ST-KA...)

STARLOCK® caps are an easy way to fix light duty wheels on an axle. The wheel is placed on an axle as the end wheel, and the STARLOCK® cap is pressed onto the outer end of the axle. STARLOCK® caps are available for the following axle diameters: 12, 15, 20 and 25 mm.



PTFE coated stainless steel axle tube

(product code: XAT...)

The PTFE coated stainless steel axle tube consists of a stainless steel axle tube and a PTFE coating. When rotating and under load, the PTFE coating expands onto the inside of the plain bore of the wheel. This provides the desired pairing (PTFE / stainless steel) with outstanding sliding characteristics. It also reduces noise emissions.

This option is available for a wide range of heat-resistant wheel series.

Please refer to the "versions / options" section on the relevant pages for more information.

A variety of heat-resistant castors in the PHN and VKHT wheel series are available with a PTFE coated stainless steel axle tube as standard (see section 10).

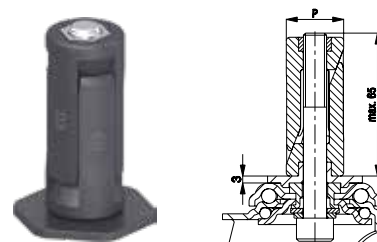
Versions / options for light-duty castors

1

Synthetic expander fitting for round tubes *

Product code suffix for LRA series	Product code suffix for LKRA series	Internal tube dimension (P) [mm]	Available for all swivel castors in the LRA/LKRA series with bolt hole \varnothing 11 mm. Swivel castor and expander secured to prevent loosening with positive locking. Maximum fitting length is 65 mm. Increases total height of swivel castors by 3 mm.
-ER02	-ER12	\varnothing 20–25	Detailed description: page 105
-ER03	-ER13	\varnothing 25–30	
-ER04	-ER14	\varnothing 30–35	
-ER05	-ER15	\varnothing 35–40	

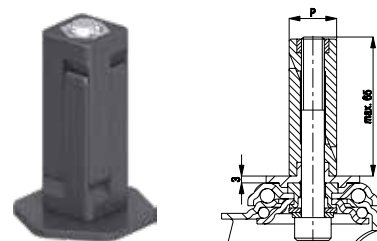
* Corrosion-resistant versions page 398



Synthetic expander fitting for square tubes *

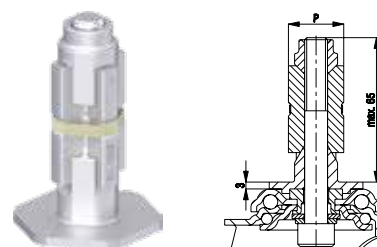
Product code suffix for LRA series	Product code suffix for LKRA series	Internal tube dimension (P) [mm]	Available for all swivel castors in the LRA/LKRA series with bolt hole \varnothing 11 mm. Swivel castor and expander secured to prevent loosening with positive locking. Maximum fitting length is 65 mm. Increases total height of swivel castors by 3 mm.
-EV02	-EV12	\square 18–21	Detailed description: page 105
-EV03	-EV13	\square 21–25	
-EV04	-EV14	\square 25–29	
-EV05	-EV15	\square 29–32	
-EV07	-EV17	\square 32–38.5	
	-EV18	\square 35.5–41	

* Corrosion-resistant versions page 398



Metal expander fitting for round and square tubes

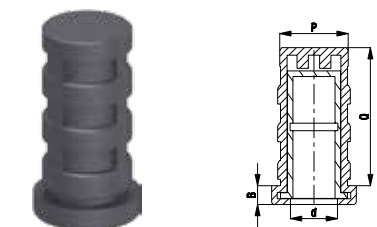
Product code suffix for LRA series	Product code suffix for LKRA series	Internal tube dimension round tube (P) [mm]	Internal tube dimension square tube (P) [mm]	Available for all swivel castors in the LRA/LKRA series with bolt hole \varnothing 11 mm. Swivel castor and expander secured against rotation by positive locking. Maximum fitting length is 65 mm. Increases total height of swivel castors by 3 mm.
-E01	-E11	\varnothing 17–19	\square 17–19	Detailed description: page 105
-E02	-E12	\varnothing 20–25	\square 18–21	
-E03	-E13	\varnothing 25–30	\square 21–25	
-E04	-E14	\varnothing 30–35	\square 25–29	
-E05	-E15	\varnothing 35–40	\square 29–32	
-E07	-E17	\varnothing 39–45	\square 32–38.5	



Synthetic castor socket for round tube

Product code	Internal tube dimension round tube (P) [mm]	Flange dimension \varnothing (d) x height (B) [mm]	Fitting length castor sockets (Q) [mm]	Available for all swivel castors with plug-in pin \varnothing (d) 11 x 30.5 mm in the LRA series. Detailed description: page 105
RHR 20-18/11A	\varnothing 18.0	\varnothing 20.0 x 5.0	42	
RHR 22-19/11A	\varnothing 19.0	\varnothing 22.0 x 5.0	42	

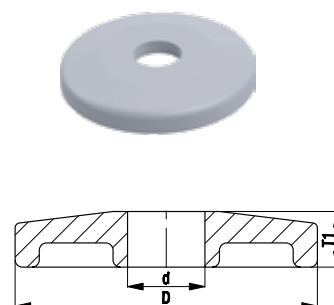
Other dimensions are available upon request



Buffers for round and square tubes

Product code	Wheel \varnothing (D) [mm]	Wheel width (T1) [mm]	Hole (d) [mm]	Buffers reduce the risk of damage to walls and vehicles in the event of a collision. Buffers for round and square tubes are fixed or connected to tubular frames in the external areas of vehicles. AG series: Made from soft synthetic polyethylene, hardness 48 Shore D, colour silver grey RAL 7001, non-marking. ARG series: Made from solid rubber, hardness 75 Shore A, colour grey, non-marking. Detailed description: page 116
Synthetic buffers (polyethylene)				
AG 100/R25	100	17.5	\varnothing 25	
AG 100/V25	100	17.5	\square 25 x 25	
AG 125/R25	125	17.5	\varnothing 25	
AG 125/V25	125	17.5	\square 25 x 25	
Solid rubber buffers				
ARG 75/R10	75	23	\varnothing 10	
ARG 100/R26	100	23	\varnothing 26	
ARG 100/R32	100	23	\varnothing 32	
ARG 125/R26	125	23	\varnothing 26	
ARG 125/R32	125	23	\varnothing 32	

Other dimensions and special colours available upon request



2 Versions / options for Blickle WAVE synthetic castors

“central-stop” central brake with stem

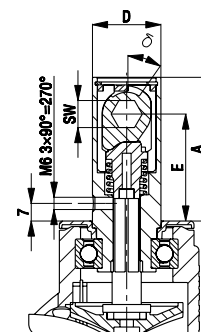
Product code suffix	Stem height (A) [mm]	Operating angle (Ø)	Stem Ø (D) [mm]	Clearance between top plate and centre of hexagon (E) [mm]	Width across flats (SW) [mm]
-CS11	58.5	35 °	28	43.5	11

This brake system provides friction-locking for the swivel head and wheel. It is actuated using a central lever that connects to the brake linkage on the unit.

The advantages at a glance:

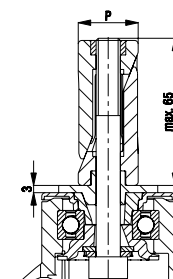
- Small operating angle with little force required to actuate and release the brake.
- Space-saving design with brake mechanism integrated into the zinc-plated stem, blue-passivated, Cr6-free.
- Central actuation of two to four castors possible using brake linkage. This provides a high level of flexibility in terms of how the brake lever is designed and positioned.
- The friction-locking ensures that the brake is not damaged if the brake forces are exceeded.

Available for all Blickle WAVE synthetic castors (with the exception of the corrosion-resistant version).



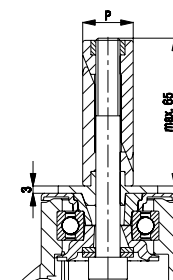
Synthetic expander fitting for round tubes

Product code suffix	Product code suffix corrosion-resistant version	Internal tube dimension (P) [mm]	Available for all Blickle WAVE synthetic castors with bolt hole Ø 11 mm with the exception of the electrically conductive version. Castor and expander secured to prevent loosening with positive locking. Maximum fitting length is 65 mm. Increases total height of castors by 3 mm.
-ER52	-EXR52	Ø 20–25	Detailed description: page 105
-ER53	-EXR53	Ø 25–30	
-ER54	-EXR54	Ø 30–35	
-ER55	-EXR55	Ø 35–40	



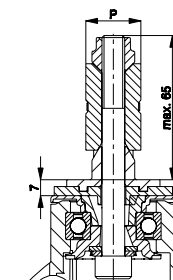
Synthetic expander fitting for square tubes

Product code suffix	Product code suffix corrosion-resistant version	Internal tube dimension (P) [mm]	Available for all Blickle WAVE synthetic castors with bolt hole Ø 11 mm with the exception of the electrically conductive version. Castor and expander secured to prevent loosening with positive locking. Maximum fitting length is 65 mm. Increases total height of castors by 3 mm.
-EV52	-EXV52	□ 18–21	Detailed description: page 105
-EV53	-EXV53	□ 21–25	
-EV54	-EXV54	□ 25–29	
-EV55	-EXV55	□ 29–32	
-EV57	-EXV57	□ 32–38.5	



Metal expander fitting for round and square tubes

Product code suffix	Internal tube dimension round tube (P) [mm]	Internal tube dimension square tube (P) [mm]	Available for all Blickle WAVE synthetic castors with bolt hole Ø 11 mm with the exception of the corrosion-resistant version. Castor and expander secured to prevent loosening with positive locking. Maximum fitting length is 65 mm. Increases total height of castors by 7 mm.
-E51	Ø 17–19	□ 17–19	Detailed description: page 105
-E52	Ø 20–25	□ 18–21	
-E53	Ø 25–30	□ 21–25	
-E54	Ø 30–35	□ 25–29	
-E55	Ø 35–40	□ 29–32	
-E57	Ø 39–45	□ 32–38.5	



Versions / options for Blickle WAVE synthetic castors

Buffers for round and square tubes

Product code Synthetic (Polyethylene)	Product code Solid rubber	Wheel Ø (D) [mm]	Wheel width (T1) [mm]	Hole (d) [mm]
Colour grey white				
AW 100/R25		100	17.5	Ø 25
AW 100/V25		100	17.5	□ 25 x 25
AW 125/R25		125	17.5	Ø 25
AW 125/V25		125	17.5	□ 25 x 25
Colour silver grey				
AG 100/R25		100	17.5	Ø 25
AG 100/V25		100	17.5	□ 25 x 25
AG 125/R25		125	17.5	Ø 25
AG 125/V25		125	17.5	□ 25 x 25
Colour grey				
	ARG 75/R10	75	23	Ø 10
	ARG 100/R26	100	23	Ø 26
	ARG 100/R32	100	23	Ø 32
	ARG 125/R26	125	23	Ø 26
	ARG 125/R32	125	23	Ø 32

Buffers reduce the risk of damage to walls and vehicles in the event of a collision. Buffers for round and square tubes are fixed or connected to tubular frames in the external areas of vehicles.

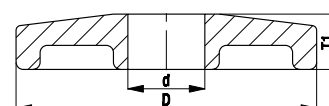
AW/AG series:

Made from soft synthetic polyethylene, hardness 48 Shore D, non-marking, colour grey white RAL 9002 (**AW**) or colour silver grey RAL 7001 (**AG**).

ARG series:

Made from solid rubber, hardness 75 Shore A, colour grey (similar to RAL 7001), non-marking.

Detailed description: Page 116



Synthetic rotating buffers (polyethylene)

Product code suffix Zinc-plated bolt	Product code suffix Corrosion-resistant bolt	Wheel Ø (D) [mm]	Wheel width (T1) [mm]	Threaded pin (Ø x height) (d x Q) [mm]
Colour grey white				
-AMW100	-AMWX100	100	17.5	M10 x 27
-AMW125	-AMWX125	125	17.5	M10 x 27
Colour silver grey				
-AMG100	-AMGX100	100	17.5	M10 x 27
-AMG125	-AMGX125	125	17.5	M10 x 27

Other dimensions and special colours available upon request.

Buffers reduce the risk of damage to walls and vehicles in the event of a collision. Rotating buffers prevent grinding against walls in the event of a collision.

-AMW/-AMG series:

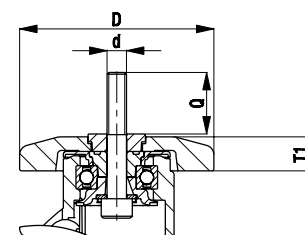
Made of soft polyethylene, hardness 48 Shore D, non-marking, with high strength synthetic plain bore bush, colour grey white RAL 9002 (**-AMW**) or colour silver grey RAL 7001 (**-AMG**). Buffers are connected directly to the synthetic castors using a zinc-plated (**-AMW/-AMG**) or corrosion-resistant (**-AMWX/-AMGX**) DIN 912 bolt.

Synthetic castors with rotating buffers are fitted to the unit with the protruding bolt (threaded pin).

Available for all Blickle WAVE synthetic castors with Ø 11 mm bolt hole.

Increases total height of castors by 9 mm.

Detailed description: page 116



Versions / options for Blickle MOVE twin synthetic castors

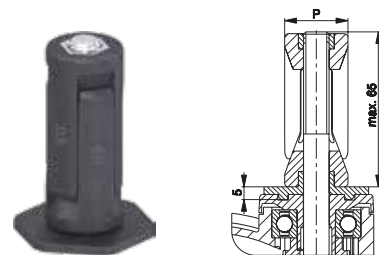
2

Synthetic expander fitting for round tubes

Product code suffix	Product code suffix Corrosion-resistant version	Internal tube dimension (P) [mm]
-ER62	-EXR62	Ø 20–25
-ER63	-EXR63	Ø 25–30
-ER64	-EXR64	Ø 30–35
-ER65	-EXR65	Ø 35–40

Available for all Blickle MOVE twin synthetic castors with the exception of the electrically conductive version. Castor and expander secured to prevent loosening with positive locking.
Maximum fitting length is 65 mm.
Increases total height of castors by 5 mm.

Detailed description: page 105

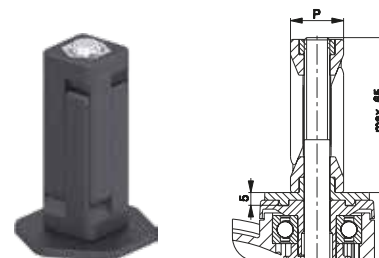


Synthetic expander fitting for square tubes

Product code suffix	Product code suffix Corrosion-resistant version	Internal tube dimension (P) [mm]
-EV62	-EXV62	□ 18–21
-EV63	-EXV63	□ 21–25
-EV64	-EXV64	□ 25–29
-EV65	-EXV65	□ 29–32
-EV67	-EXV67	□ 32–38.5

Available for all Blickle MOVE twin synthetic castors with the exception of the electrically conductive version. Castor and expander secured to prevent loosening with positive locking.
Maximum fitting length is 65 mm.
Increases total height of castors by 5 mm.

Detailed description: page 105

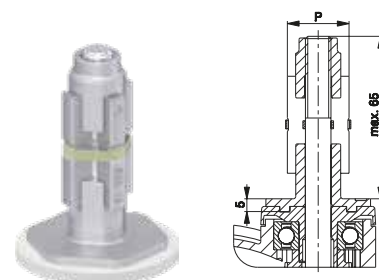


Metal expander fitting for round and square tubes

Product code suffix	Internal tube dimension round tube	Internal tube dimension square tube
	(P) [mm]	(P) [mm]
-E61	Ø 17–19	□ 17–19
-E62	Ø 20–25	□ 18–21
-E63	Ø 25–30	□ 21–25
-E64	Ø 30–35	□ 25–29
-E65	Ø 35–40	□ 29–32
-E67	Ø 39–45	□ 32–38.5

Available for all Blickle MOVE twin synthetic castors with the exception of the corrosion-resistant version. Castor and expander secured to prevent loosening with positive locking.
Maximum fitting length is 65 mm.
Increases total height of castors by 5 mm.

Detailed description: page 105



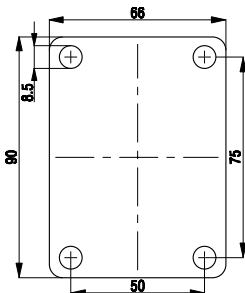
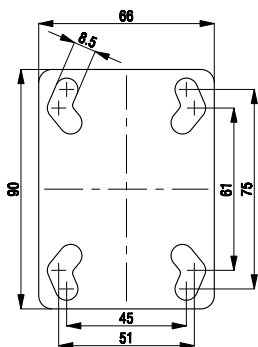
Versions / options for Blickle MOVE twin synthetic castors

Top plate fittings for Blickle MOVE twin synthetic castors

Product code suffix	Product code suffix Stainless steel version	Plate size [mm]	Bolt hole spacing [mm]	Bolt hole \emptyset [mm]	Top plate fitting in zinc-plated, blue-passivated design (Cr6-free) or corrosion-resistant design. Available upon request.
-P25	-PX25	90 x 66	75 x 45 / 61 x 51	8.5	
-P26	-PX26	90 x 66	75 x 50	8.5	

Plate no. 25

Plate no. 26



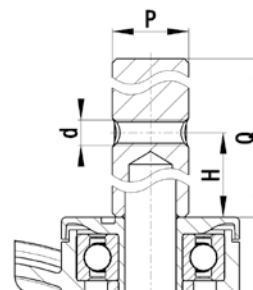
Stem fitting for Blickle MOVE twin synthetic castors

Product code suffix	Product code suffix Stainless steel version	Stem \emptyset P [mm]	Stem length Q [mm]	\emptyset Cross hole d [mm]	Position cross hole H [mm]
-ZA51	-ZAX51	18	62	M6	30
-ZA55	-ZAX55	22	45	M8	20

The castor is fitted using a plug-in stem, which is inserted into a corresponding tube or hole and secured. The stem fitting is fixed to the castor and a fixing bolt (cross hole) or clamp must be used to prevent it rotating or falling out.

The load capacities specified here can only be reached if the top plate of the swivel castor is completely supported by the entire diameter.

A stainless steel plug-in stem fitting is available for corrosion-resistant swivel castors.
The aforementioned dimensions must be taken into consideration when selecting the fitting with a stem.



Special systems and solutions

Truck locks and jacks

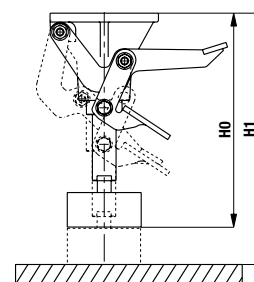
Truck locks

Truck locks keep transport equipment in a resting position. They are attached directly to the transport equipment. Operating the pedal takes some of the load off the transport equipment without raising it up. When operated, the truck lock deflects by approximately 10 mm. The maximum surface contact pressure in combination with suitable swivel and fixed castors amounts to approx. 60 kg. The following truck lock with a plate size of 100 x 85 mm can be combined with the LE, L and LK castor series. The truck locks with a plate size of 140 x 110 mm can be combined with the LK (wheel Ø 125x50-200 mm) LH, LO and LS castor series. Other versions are available upon request. Zinc-plated, blue-passivated, Cr6-free.

Product code	Total height unactuated	Total height actuated, extended	Plate size [mm]	Bolt hole spacing [mm]	Bolt hole diameter [mm]
	(H0) [mm]	(H1) [mm]			
FF 100-1	108	138	100 x 85	80 x 60	9
FF 125-1	133	163	100 x 85	80 x 60	9
FF 125	142	180	140 x 110	105 x 75-80	12.3
FF 150	170	208	140 x 110	105 x 75-80	12.3
FF 160	175	213	140 x 110	105 x 75-80	12.3
FF 200	217	255	140 x 110	105 x 75-80	12.3

FF 100-1 + FF 125-1

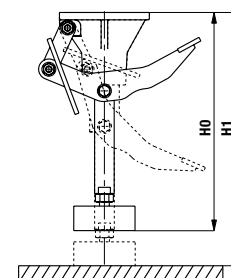
FF 125 - FF 200



Jacks

Jacks are used to raise transport equipment up in their resting position. They are attached directly to the transport equipment. Actuating the pedal raises the transport equipment up. Jacks can be combined with a wide range of castor series. Jacks perform at their best when the total height of the actuated jack (H1) exceeds the total height of the fixed and swivel castors by 5 mm. Depending on the weight of the operator, they can provide a lifting force of between 150 kg and 250 kg. The vertical load on the jack must not exceed 500 kg when raised. Zinc-plated, blue-passivated, Cr6-free.

Product code	Total height unactuated	Total height actuated	Plate size [mm]	Bolt hole spacing [mm]	Bolt hole Ø [mm]
	(H0) [mm]	(H1) [mm]			
WH 160	166	209	140 x 110	105 x 75-80	12.3
WH 200	207	250	140 x 110	105 x 75-80	12.3
WH 250	257	300	140 x 110	105 x 75-80	12.3



Special systems and solutions

Adapter plates

Adapter plates can be used to compensate for differences between the mounting height of different castors. Adapter plates can also be used to modify the mounting height of the transport equipment. Adapter plates are available in steel (zinc-plated, blue-passivated, Cr6-free) and synthetic (nylon, black) designs. Untreated steel adapter plates are also available for welding upon request.

Steel adapter plates, zinc-plated

Product code	Plate size [mm]	Bolt hole spacing [mm]	Bolt hole diameter [mm]	Height [mm]
APS1-02,5	100 x 85	80 x 60	9	2,5
APS1-08	100 x 85	80 x 60	9	8
APS3-04	140 x 110	105 x 75-80	11	4
APS3-08	140 x 110	105 x 75-80	11	8
APS3-10	140 x 110	105 x 75-80	11	10



Synthetic adapter plates

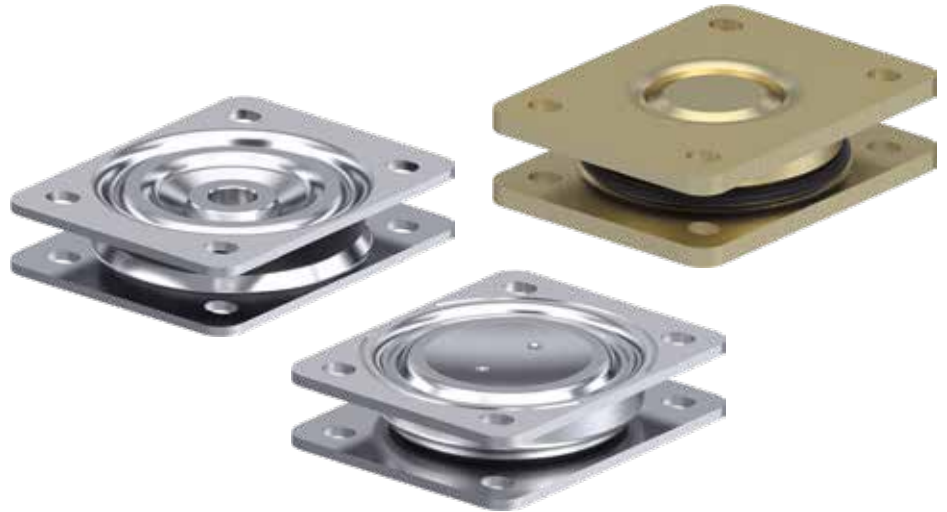
Product code	Plate size [mm]	Bolt hole spacing [mm]	Bolt hole diameter [mm]	Height [mm]
AP1-10	100 x 85	80 x 60	9	10
AP3-17	140 x 110	105 x 75-80	11	17



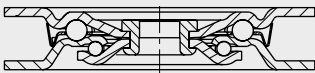
Special systems and solutions

Swivel heads

Swivel heads can be used for a wide variety of applications: rotating plates, rotating platforms, flatbed turntables or axle-pivot steering systems. When combined with standard fixed castors, they can provide castor systems without an offset, which are easy to steer.

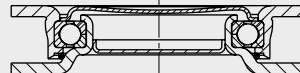


1 DK-L series



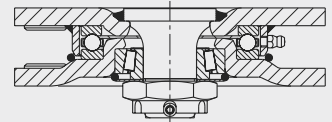
- pressed steel
- double ball bearing
- strong central kingpin
- swivel head seal
- minimum swivel head play and smooth rolling characteristic and increased service life thanks to the special dynamic Blickle riveting process
- zinc-plated, blue-passivated, Cr6-free

2 DK-LUH series



- strong pressed steel
- four-point ball bearing for extremely heavy loads
- enclosed and sealed swivel head
- particularly resistant to impact and shocks due to specially-shaped hardened bearing seats
- zinc-plated, blue-passivated, Cr6-free

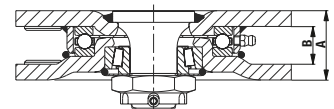
3 DK-LS series



- particularly robust welded steel construction
- axial grooved ball bearing ISO 104 and tapered roller bearing ISO 355
- welded central kingpin, extremely stable, bolted and secured
- dust and splash-proof
- grease nipple
- zinc-plated, yellow-passivated, Cr6-free

Swivel heads	Load capacity* [kg]	Plate size [mm]	Bolt hole spacing [mm]	Bolt hole Ø [mm]	Flange plate height (A) [mm]	Flange plate internal clearance (B) [mm]
DK-L-3	400	140 x 110	105 x 75-80	11	28	20
DK-LUH-3	1,000	140 x 110	105 x 75-80	11	31	21
DK-LS-3	1,500	140 x 110	105 x 75-80	11	37	21
DK-LS-35	2,500	175 x 140	140 x 105	14	44	24
DK-LS-36	2,500	200 x 160	160 x 120	14	44	24
DK-LS-38	5,500	255 x 200	210 x 160	18	60	25

* With central axial load



Wheels and castors guide

Versions / options



Automatic direction reset device

(product code suffix: -RIR2)

Direction reset devices point a swivel castor in a pre-defined direction in an unloaded state. This mechanism reduces issues that affect the handling of transport equipment used in automated facilities and loading and unloading areas.

The RIR2 mechanism is designed for an increased service life.

Special versions are available to provide tailored holding forces and fixings.



Thread guard

(product code suffix: -FA or "KA" or "KF" in the product code)

The thread guard discs are made from zinc-plated, blue-passivated, Cr6-free pressed steel (product code suffix: -FA) or by using plastic injection moulding ("KA" or "KF" in the product code). They prevent threads wrapping around the wheel axle and blocking the wheels.

In the "KA" version, the thread guard encompasses the wheel hub.

In the "KF" version, the thread guard covers both the hub and the central bar of the wheel.

This option is available for a wide range of swivel and fixed castor series.

Please refer to the "versions / options" section on the relevant pages for more information.



Foot guard

(product code suffix: -FS, -FP and -FG)

The foot guard is made from zinc-plated, blue-passivated, Cr6-free pressed steel (product code suffix: -FS). For welded steel castors (LO / LS series), the foot guard is a robust welded structure. For corrosion-resistant stainless steel castors, the foot guard is made of an impact-resistant synthetic material (polyethylene, product code suffix: -FP). The foot guard is bolted or welded onto the bracket and prevents foot injuries. It is normally 15 to 25 mm away from the floor.

A special version can be provided to ensure a different distance from the floor. Spring-loaded, zinc-plated, blue-passivated, Cr6-free versions (product code suffix: -FG) are also available.

This option is available for a wide range of swivel and fixed castor series.

Please refer to the "versions / options" section on the relevant pages for more information.



Buffer

(product code: AW..., AG... and ARG...)

Buffers reduce the risk of damage to walls and vehicles in the event of a collision. Buffers for round and square tubes are made from polyethylene or a solid rubber, and are available in the colours grey white, silver grey and grey. They are fixed or connected to tubular frames in the external areas of vehicles. See page 148, 169 and 398 for information about options.

Rotating buffers (product code suffix: -AMW(X), -AMG(X)) are also available for Blickle WAVE synthetic castors. They also prevent scraping against walls.

A bolt is used to fit the buffers directly onto the castors.

See options page 169.

spring-loaded foot guard

