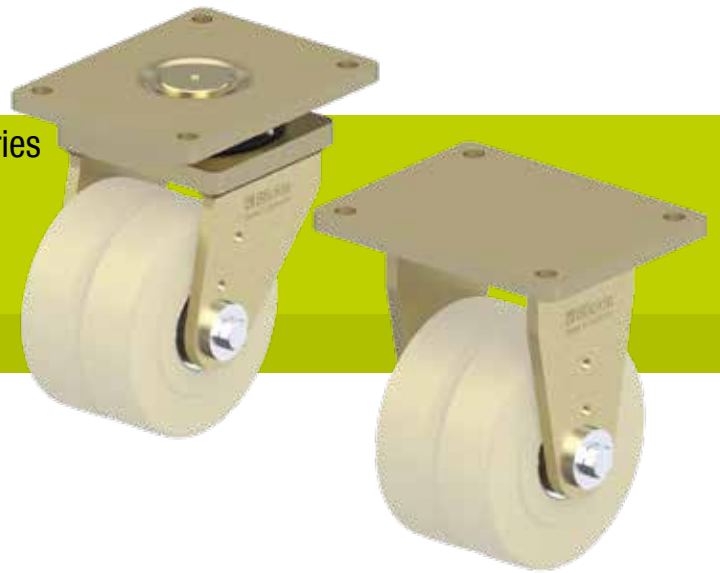


# LSD-GSP0, BSD-GSP0, LSSD-GSP0, BSSD-GSP0 series

**Welded steel extra heavy-duty twin wheel castors, extra heavy-duty swivel head, with heavy-duty wheels made of cast nylon**



1,750–30,000 kg

**Bracket:** LSD/BSL, LSSD/BSSD series

- particularly robust welded steel construction, zinc-plated, yellow-passivated, Cr6-free

**Swivel bracket:**

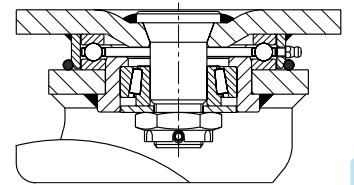
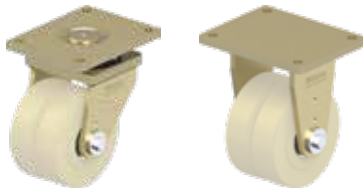
- axial grooved ball bearing ISO 104 and tapered roller bearing ISO 355 in the swivel head
- LSSD-GSP0 500K: four-point swivel bearing for extremely heavy loads
- bolted and secured welded central kingpin, extremely strong (with exception of LSSD-GSP0 500K)
- dust and splash-proof
- grease nipple

**Wheel:** GSP0 series

- high-quality cast nylon, reaction-injected, impact resistant, hardness 80 Shore D, colour natural beige

**Additional details:**

- bracket series: page 94
- brakes: page 112–113
- wheel series: page 368
- bearing types: page 84–85



Swivel castors	Fixed castors	Wheel Ø [mm]	Wheel width [mm]	Load capacity [kg]	Bearing type	Total height [mm]	Plate size [mm]	Bolt hole spacing [mm]	Bolt hole Ø [mm]	Offset swivel castor [mm]
LSD-GSP0 80K	BSD-GSP0 80K	80	2 x 40	1,750 *	ball bearing	125	140 x 110	105 x 75–80	11	40
LSD-GSP0 100K	BSD-GSP0 100K	100	2 x 40	2,250 *	ball bearing	160	175 x 140	140 x 105	14	45
LSD-GSP0 125K	BSD-GSP0 125K	125	2 x 55	3,600 *	ball bearing	205	255 x 200	210 x 160	18	50
LSD-GSP0 150K	BSD-GSP0 150K	150	2 x 55	4,500	ball bearing	230	255 x 200	210 x 160	18	55
LSD-GSP0 200K	BSD-GSP0 200K	200	2 x 55	5,400	ball bearing	290	255 x 200	210 x 160	18	60
LSD-GSP0 250K	BSD-GSP0 250K	250	2 x 65	9,000	ball bearing	380	400 x 300	340 x 240	26	110
LSD-GSP0 302K	BSD-GSP0 302K	300	2 x 110	18,000	ball bearing	500	500 x 400	400 x 300	33	110
LSD-GSP0 400K	BSD-GSP0 400K	400	2 x 110	20,000	ball bearing	600	500 x 400	400 x 300	33	125
LSSD-GSP0 500K	BSSD-GSP0 500K	500	2 x 130	30,000	ball bearing	675	500 x 500	400 x 400	39	150

\* Load capacity test in compliance with DIN 12532 with extended breaks to avoid thermal overloading

Fixed castors: long side of plate parallel to the wheel axle

**Versions / options**



	image LSSD-GSP0 500K	with "Radstop" wheel brake	with directional lock 4 x 90°	with directional lock 4 x 90° (inserted by hand)	with steel foot guard
Technical description page		113	115	115	116
<b>Product code suffix</b>		<b>-RAH</b>	<b>-RI4</b>	<b>-RI4H</b>	<b>-FS</b>
Available for		upon request	wheel Ø 80–100 mm upon request	wheel Ø 125–500 mm upon request	upon request