

Tecnodin**Handles**

Page

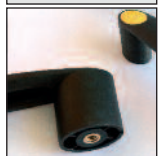
67



67



67



68



69



69



70



70



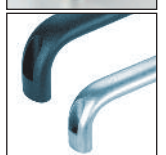
71



72



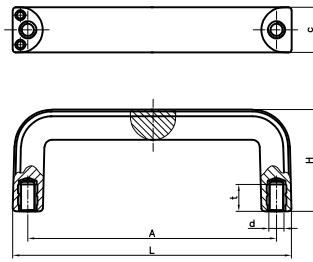
72



72



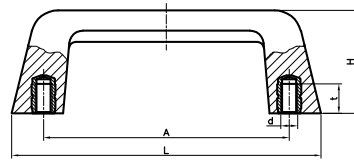
1153 SOLID HANDLE WITH THREADED INSERTS



Code	L	A	d	H	c	t	Color
115312301	124	109 ± 1	M6	45	21	10	Black
115314301	148	132 ± 1	M8	54	24	14	Black

Brass female threaded inserts.
PF: Black Duroplast FS 31 DIN 7708.

1161 ED HANDLE WITH THREADED INSERTS






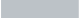


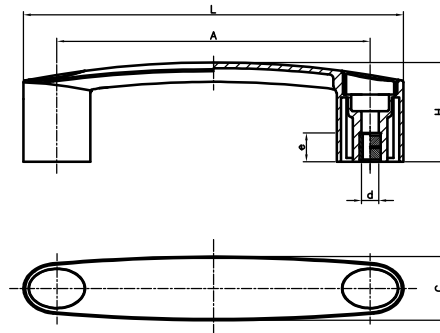
Code	L	A	d	H	t	Color
116113301	130	109 ± 1	M6	43	10	Black
116116301	165	131 ± 1	M8	55	14	Black

Brass female threaded inserts.
PF: Black Duroplast FS 31 DIN 7708.

1155 CT THERMOPLASTIC D HANDLE WITH THREADED INSERT



	RAL 7021
	RAL 2004
	RAL 3001
	RAL 5005
	RAL 1021
	RAL 7038



Drilled-out brass inserts.
PA: Black reinforced polyamide.
Caps on the following colours: Black, Orange, Red, Blue, Yellow and Grey similar to the RAL indicated above.

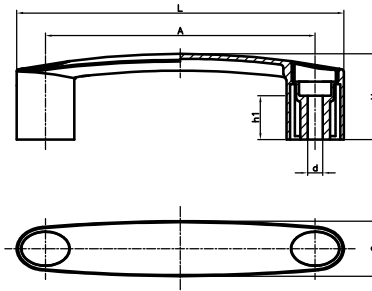
Black Handle

Black Covers	Orange Covers	Red Covers	Blue Covers	Yellow Covers	Grey Covers	L	A	d	H	C	e
115509410	115509440	115509450	115509420	115509430	115509490	116	93±1	M6	34	20	11.5
115510410	115510440	115510450	115510420	115510430	115510490	146	109±1	M6	41	25	11.5
115511410	115511440	115511450	115511420	115511430	115511490	146	117±1	M6	41	25	11.5
115513410	115513440	115513450	115513420	115513430	115513490	163	132±1	M6	45	29	11.5

1155 CT THERMOPLASTIC HANDLE WITH THROUGH HOLES



- RAL 7021
- RAL 2004
- RAL 3001
- RAL 5005
- RAL 1021
- RAL 7038



Through holes handle.
 PA: Black reinforced polyamide.
 Caps on the following colours: Black, Orange, Red, Blue, Yellow and Grey similar to the RAL indicated above.

Black Handle						L	A	d	H	C	h1
Black Covers	Orange Covers	Red Covers	Blue Covers	Yellow Covers	Grey Covers						
115509210	115509240	115509250	115509220	115509230	115509290	116	93 ± 1	6,5	34	20	20
115510210	115510240	115510250	115510220	115510230	115510290	146	109 ± 1	8,5	41	25	20
115511210	115511240	115511250	115511220	115511230	115511290	146	117 ± 1	8,5	41	25	20
115513210	115513240	115513250	115513220	115513230	115513290	163	132 ± 1	8,5	45	29	22
115515210	115515240	115515250	115515220	115515230	115515290	181	150 ± 1	8,5	48	31	25

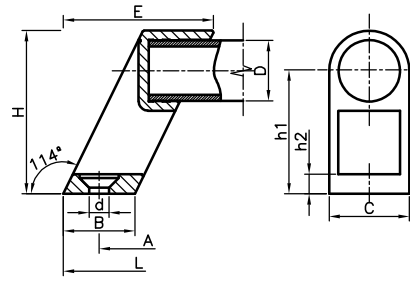
Orange Handle	Red Handle	Blue Handle	Yellow Handle	Grey Handle	L	A	d	H	C	h1
Orange Covers	Red Covers	Blue Covers	Yellow Covers	Grey Covers						
115509040	115509050	115509010	115509030	115509090	116	93 ± 1	6,5	34	20	20
115510040	115510050	115510010	115510030	115510090	146	109 ± 1	8,5	41	25	20
115511040	115511050	115511010	115511030	115511090	146	117 ± 1	8,5	41	25	20
115513040	115513050	115513010	115513030	115513090	163	132 ± 1	8,5	45	29	22
115515040	115515050	115515010	115515030	115515090	181	150 ± 1	8,5	48	31	25

1156 MGM TUBULAR BRIDGE HANDLE WITH THROUGH HOLES



- RAL 7021
- RAL 2004
- RAL 3001
- RAL 5005
- RAL 1021

Through hole handle's supports.
PA: Reinforced polyamide.
Tube in anodised aluminium.



BLACK
Code 1156 00 010 for tube Ø 20mm (1 unit)
Code 1156 00 000 for tube Ø 25mm (1 unit)



ORANGE
Code 1156 00 410 for tube Ø 20mm (1 unit)
Code 1156 00 400 for tube Ø 25mm (1 unit)



RED
Code 1156 00 510 for tube Ø 20mm (1 unit)
Code 1156 00 500 for tube Ø 25mm (1 unit)



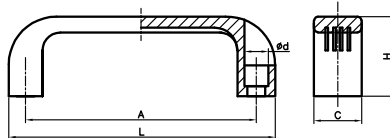
BLUE
Code 1156 00 210 for tube Ø 20mm (1 unit)
Code 1156 00 200 for tube Ø 25mm (1 unit)



YELLOW
Code 1156 00 310 for tube Ø 20mm (1 unit)
Code 1156 00 300 for tube Ø 25mm (1 unit)

Black Code	Orange Code	Red Code	Blue Code	Yellow Code	L	A	d	H	B	C	D	E	h1	h2
115620201	115620241	115620251	115620221	115620231	223	200 ± 1	6,4	53	23	26	20	47	40	6
115625201	115625241	115625251	115625221	115625231	273	250 ± 1	6,4	53	23	26	20	47	40	6
115630201	115630241	115630251	115630221	115630231	323	300 ± 1	6,4	53	23	26	20	47	40	6
115635201	115635241	115635251	115635221	115635231	373	350 ± 1	6,4	53	23	26	20	47	40	6
115640201	115640241	115640251	115640221	115640231	423	400 ± 1	6,4	53	23	26	20	47	40	6
115650201	115650241	115650251	115650221	115650231	523	500 ± 1	6,4	53	23	26	20	47	40	6
115660201	115660241	115660251	115660221	115660231	617	600 ± 1	6,4	53	23	26	20	47	40	6
115670201	115670241	115670251	115670221	115670231	723	700 ± 1	6,4	53	23	26	20	47	40	6
115620101	115620141	115620151	115620121	115620131	229	200 ± 1	8,4	60	29	32	25	56	43	8
115625101	115625141	115625151	115625121	115625131	279	250 ± 1	8,4	60	29	32	25	56	43	8
115630101	115630141	115630151	115630121	115630131	329	300 ± 1	8,4	60	29	32	25	56	43	8
115635101	115635141	115635151	115635121	115635131	379	350 ± 1	8,4	60	29	32	25	56	43	8
115640101	115640141	115640151	115640121	115640131	429	400 ± 1	8,4	60	29	32	25	56	43	8
115650101	115650141	115650151	115650121	115650131	529	500 ± 1	8,4	60	29	32	25	56	43	8
115660101	115660141	115660151	115660121	115660131	629	600 ± 1	8,4	60	29	32	25	56	43	8
115670101	115670141	115670151	115670121	115670131	729	700 ± 1	8,4	60	29	32	25	56	43	8
115600010	115600410	115600510	115600210	115600310		-	6,4	53	23	26	20	47	40	6
115600000	115600400	115600500	115600200	115600300		-	8,4	60	29	32	25	56	43	8

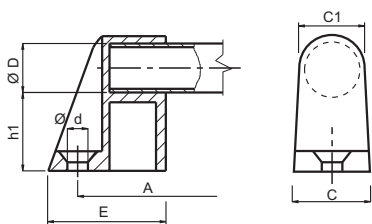
1157 HANDLE WITH THROUGH HOLES



Code	L	A	d	H	C	Color
115711200	110	94 ± 1	6,5	37	21	Black
115713200	133	116 ± 1	9	40	24	Black
115713201	139	120 ± 1	8,5	40	24	Black
115714200	151	132 ± 1	8,5	43	26	Black
115718200	200	180 ± 1	8,5	51	28	Black
115723200	262	235 ± 1	10,5	53	32	Black

Through holes handle.
PA: Black reinforced polyamide.

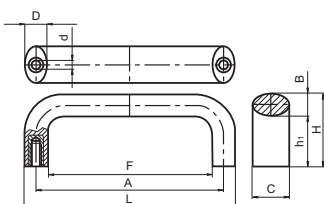
1160 ALUPLAST THERMOPLASTIC HANDLE WITH THROUGH HOLES



Code	A	d	h1	C	C1	D	E	Color
116020101	200±1	8.4	32	28	26	20	47,8	Black
116030101	300±1	8.4	32	28	26	20	47,8	Black
116040101	400±1	8.4	32	28	26	20	47,8	Black
116050101	500±1	8.4	32	28	26	20	47,8	Black
116070101	700±1	8.4	32	28	26	20	47,8	Black

Through hole handle's supports.
PA: Black reinforced polyamide.
Tube in anodised aluminium.

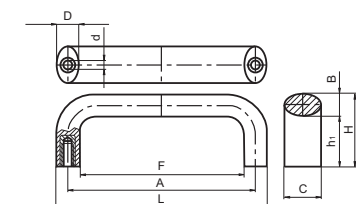
4705 TMP HANDLE WITH THREADED INSERTS



Code	L	A	d	B	H	h1	C	D	F	Color
470509301	98.5	86±1	M6	12.5	40	28	20	12.5	73.5	Black
470510301	106.5	94±1	M6	12.5	40	28	20	12.5	81.5	Black
470513301	134	117±1	M6	16	50	34	25	16	102	Black
470514301	148	132±1	M8	16	50	34	25	16	116	Black
470516301	168	150±1	M8	18	58	40	29	18	132	Black
470519301	197	179±1	M8	18	58	40	29	18	161	Black

PA: Reinforced polyamide.
Brass inserts.

4705 TMP HANDLE WITH THREADED SS INSERTS

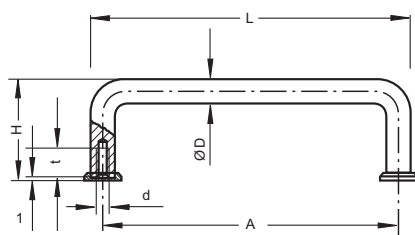


INOX
Stainless
Steel

Code	L	A	d	B	H	h1	C	D	F	Color
470509351	98.5	86±1	M6	12.5	40	28	20	12.5	73.5	Black
470510351	106.5	94±1	M6	12.5	40	28	20	12.5	81.5	Black
470513351	134	117±1	M6	16	50	34	25	16	102	Black
470514351	148	132±1	M8	16	50	34	25	16	116	Black
470516351	168	150±1	M8	18	58	40	29	18	132	Black
470519351	197	179±1	M8	18	58	40	29	18	161	Black

PA: Reinforced polyamide.
Stainless-steel inserts.

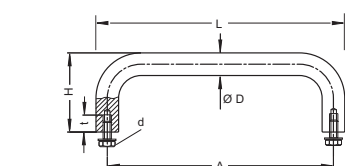
3107 HANDLE ST WITH THREADED HOLES



Threaded holes.
High gloss chromium plated surface.
Chromium coloured brass cover washers included.

Code	L	A	d	H	t	D	Finish
310705031	37	32	M3	21	6	5	Chrome
310705041	47	42	M3	25	6	5	Chrome
310705051	60	55	M3	25	6	5	Chrome
310705071	81	76	M3	25	6	5	Chrome
310705081	93	88	M3	25	6	5	Chrome
310708031	40	32	M4	33	8	8	Chrome
310708051	63	55	M4	33	8	8	Chrome
310708061	72	64	M4	33	8	8	Chrome
310708081	96	88	M4	33	8	8	Chrome
310708091	104	96	M4	33	8	8	Chrome
310708101	106	98	M4	33	8	8	Chrome
310708111	110	102	M4	33	8	8	Chrome
310708121	128	120	M4	33	8	8	Chrome
310708131	136	128	M4	33	8	8	Chrome
310708141	144	136	M4	33	8	8	Chrome
310710051	65	55	M5	41	10	10	Chrome
310710081	98	88	M5	41	10	10	Chrome
310710101	110	100	M5	41	10	10	Chrome
310710111	112	102	M5	41	10	10	Chrome
310710121	125	115	M5	41	10	10	Chrome
310710131	130	120	M5	41	10	10	Chrome
310710141	146	136	M5	41	10	10	Chrome
310710181	190	180	M5	41	10	10	Chrome
310710201	210	200	M5	41	10	10	Chrome
310710231	245	235	M5	41	10	10	Chrome
310710251	260	250	M5	41	10	10	Chrome

3125 HANDLE VA WITH THREADED HOLES

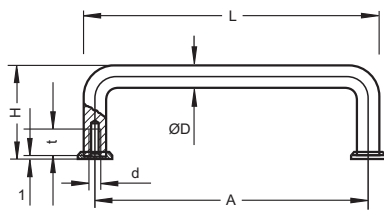


INOX
Stainless Steel

SS: Stainless steel (1.4305).
The handle is supply with stainless steel screws DIN 933 and washers DIN 125.
Optional cover plates, can be ordered as an accessory:
for Ø 8 mm: 312500008 (pack of 20 units).
for Ø 10 mm: 312500010 (pack of 20 units).
for Ø 15 mm: 312500015 (pack of 2 units).
for Ø 20 mm: 312500020 (pack of 2 units).

Code	L	A	d	D	H	t	Color
312508060	72	64	M5	8	35	10	Natural
312508081	96	88	M5	8	35	10	Natural
312508101	108	100	M5	8	35	10	Natural
312508120	128	120	M5	8	35	10	Natural
312510100	110	100	M5	10	40	10	Natural
312510120	130	120	M5	10	40	10	Natural
312510180	190	180	M5	10	40	10	Natural
312510250	260	250	M5	10	40	10	Natural
312510300	310	300	M5	10	40	10	Natural
312510350	360	350	M5	10	40	10	Natural
312515150	165	150	M6	15	55	12	Natural
312515200	215	200	M6	15	55	12	Natural
312515250	265	250	M6	15	55	12	Natural
312515300	315	300	M6	15	55	12	Natural
312515350	365	350	M6	15	55	12	Natural
312520200	220	200	M8	20	70	16	Natural
312520250	270	250	M8	20	70	16	Natural
312520300	320	300	M8	20	70	16	Natural
312520350	370	350	M8	20	70	16	Natural

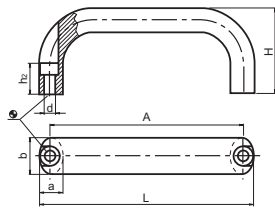
3137 HANDLE RA WITH THREADED HOLES



AL: Anodized aluminium.
 Optional cover plates, can be order as an accessory:
 313700001 natural color (pack of 20 units).
 313700004 black color (pack of 20 units).

Code	L	A	d	D	t	H	Color
313700501	65	55	M5	10	10	41	Natural
313700801	98	88	M5	10	10	41	Natural
313701001	110	100	M5	10	10	41	Natural
313701201	130	120	M5	10	10	41	Natural
313701801	190	180	M5	10	10	41	Natural
313702001	210	200	M5	10	10	41	Natural
313702301	245	235	M5	10	10	41	Natural
313702501	260	250	M5	10	10	41	Natural
313700504	65	55	M5	10	10	41	Black
313700804	98	88	M5	10	10	41	Black
313701004	110	100	M5	10	10	41	Black
313701204	130	120	M5	10	10	41	Black
313701804	190	180	M5	10	10	41	Black
313702004	210	200	M5	10	10	41	Black
313702304	245	235	M5	10	10	41	Black
313702504	260	250	M5	10	10	41	Black

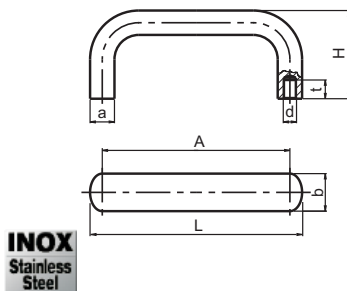
3733 OV HANDLE FRONT MOUNTING WITH THROUGH HOLES



AL: Aluminium.
 References in black color are plastic coated.

Code	L	A	d	b	H	a	h2	Color
373300141	130	116	6.4	26	55	17	17	Natural
373300151	146	132	6.4	26	55	17	17	Natural
373300161	178	164	6.4	26	57	17	17	Natural
373300171	210	196	6.4	26	57	17	17	Natural
373300341	130	116	6.4	26	53	17	17	Black
373300351	146	132	6.4	26	55	17	17	Black
373300361	178	164	6.4	26	57	17	17	Black
373300371	210	196	6.4	26	57	17	17	Black

3733 OV HANDLE BACK MOUNTING WITH THREADED HOLES



AL: Aluminium.
 SS: Stainless steel.
 References in black color are plastic coated.

Code	L	A	d	b	H	a	t	Material	Color
373300100	113	100	M6	20	49	13	10	AL	Natural
373300110	125	112	M6	20	49	13	10	AL	Natural
373300120	141	128	M6	20	51	13	10	AL	Natural
373300130	173	160	M6	20	51	13	10	AL	Natural
373300140	129	112	M8	26	55	17	12	AL	Natural
373300150	145	128	M8	26	55	17	12	AL	Natural
373300160	177	160	M8	26	57	17	12	AL	Natural
373300170	209	192	M8	26	57	17	12	AL	Natural
373300180	317	300	M8	26	57	17	12	AL	Natural
373300190	417	400	M8	26	57	17	12	AL	Natural
373300300	113	100	M6	20	49	13	10	AL	Black
373300310	125	112	M6	20	49	13	10	AL	Black
373300320	141	128	M6	20	51	13	10	AL	Black
373300330	173	160	M6	20	51	13	10	AL	Black
373300340	129	112	M8	26	55	17	12	AL	Black
373300350	145	128	M8	26	55	17	12	AL	Black
373300360	177	160	M8	26	57	17	12	AL	Black
373300370	209	192	M8	26	57	17	12	AL	Black
373300380	317	300	M8	26	57	17	12	AL	Black
373300390	417	400	M8	26	57	17	12	AL	Black
373300510	125	112	M6	20	49	13	10	SS	Natural
373300520	141	128	M6	20	51	13	10	SS	Natural